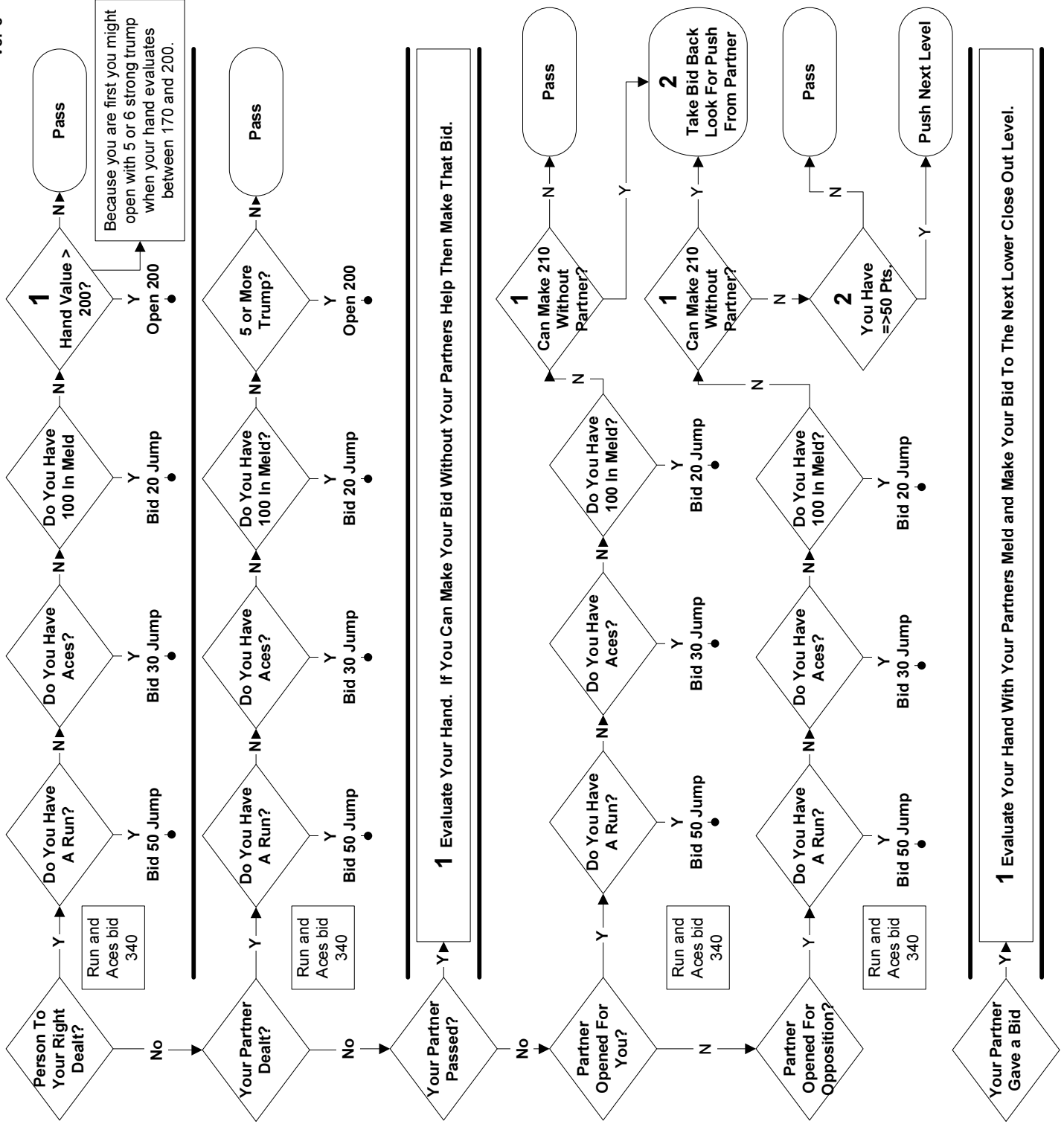


Pinochle Basic Bidding Decision Flowchart

Ver-8



1

EVALUATE HAND

Count Meld And Add To That:

4 Piece Trump Add 15 Pts. For Each Trump

5 Piece or More With The Ace in Trump Add 20 Pts For Each Piece of Trump or 15 pts for each trump if you do not have the Ace.

Add To That:

20 For Each Ace **NOT** IN Trump.

2

PUSH BIDS

When your partner makes a bid, you would push if you can cover the points of the push. To push to the next 50 level from a closed out 50 level, you need 50 points. This would be in a minimum of 50 pts in your hand in meld.

ADVANCED

You could consider pushing with 40 pts and two aces with one in a short suits (2 piece suit). The danger of a push without the necessary meld should be left to experienced players.

NOTES

Opening For The Other Team
In order to open for the other team or take a bid back from your partner, you have to be able to make the bid. Even if it's close you would pass.

ADVANCED

If you are the first bidder your partner is still in the bidding. If you evaluate your hand to 170 or better and have a dominant trump suit with strength in another suit, you may consider opening. Consideration must be given to the score at that time. This concept is to try to capture a big hand on the strength of a power hand. This tradeoff is usually worth the risk but should only be attempted by strong teams.